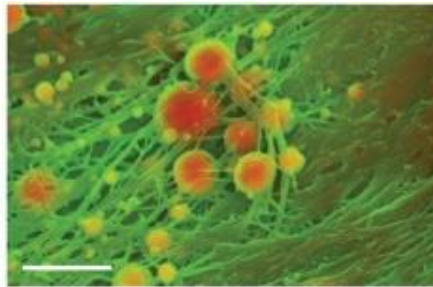
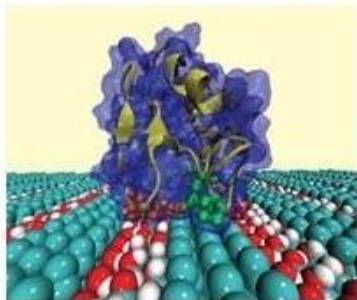


Bioengineering Sciences Seminars

Seminar: 1pm, Friday 21st March, 2014
Nightingale Building 67 Room 1027

New materials based approaches for regenerative medicine and ultrasensitive biosensing

Professor Molly Stevens, Imperial College London.



Bio-responsive nanomaterials are of growing importance with potential applications including drug delivery, diagnostics and tissue engineering.

This talk will describe our research on new materials based approaches for tissue characterisation. It will also provide an overview of our recent developments in the design of materials for ultrasensitive biosensing. We are applying these biosensing approaches to diagnose diseases ranging from cancer to global health applications.